

# **Earlex<sup>®</sup>** **SPRAYPORT<sup>®</sup>** The professional spraying series



## **HV7003/ 7005**

### **OPERATING INSTRUCTION MANUAL**

Thank you for purchasing the SprayPort<sup>®</sup> from Earlex Professional 7000 Series. This highly versatile HVLP System (high volume of air, low pressure painting) can be used for a wide variety of applications.

**BEFORE USE – PLEASE READ THE MANUAL AND SAFETY INSTRUCTIONS.**

Please retain for future reference.

Also available on our website [www.sprayport.com](http://www.sprayport.com)

To register your product visit [www.sprayport.com](http://www.sprayport.com)



# WARNING !

**IMPORTANT:** WARNING ! alerts user to a specific hazard. Other points are advisory which should be followed for safety.

**ALWAYS COMPLY WITH THE SAFETY INSTRUCTIONS SUPPLIED WITH THIS PRODUCT  
AND THE MATERIAL BEING USED**

Only use the unit as described in this manual. Additional product specific warnings may be found throughout the body of this manual where applicable.



## **FIRE AND EXPLOSION HAZARD**

**WARNING!** The substances used with this Spray Gun (paints, coatings, solvents, etc.) may contain dangerous, harmful, explosive or corrosive materials.

**WARNING!** – Use extreme caution when spraying any materials with a flash point lower than 70°F (21°C). Check the technical specifications on the paint or coating container before spraying.

- The Spray Gun must only be used with paints, coatings and solvents that have a flash point suitable for spraying. Consult the paint, coating or solvent manufacturer's instructions and Safety Data Sheets.
- **NEVER** spray near a naked flame including an appliance pilot flame.
- **NEVER** smoke while spraying.
- **DO NOT** operate light switches or run engines or similar spark producing products in the spray area if spraying solvents.
- **DO NOT** use any coatings or material containing any Halogenated Hydrocarbon constituent such as bleach and chlorine.
- Always disconnect unit from power supply when filling the paint or coating container.
- Keep the turbine in a well - ventilated area.
- Keep the turbine as far away from the spray area as the air hose will allow especially when using solvent based coatings.



## **EQUIPMENT MISUSE HAZARD**



**WARNING!** The use of any accessory or attachment, other than those recommended in this instruction manual, may present a risk of personal injury.

**WARNING!** Use the Spray Gun only for the job it was designed for. Misuse of the Spray Gun will invalidate the guarantee.

**WARNING!** If the cordset is damaged, it must be replaced with the correct Earlex part to avoid a hazard.

**WARNING!** To reduce the risk of electric shock do not expose to water. Store indoors.

- **NEVER** under any circumstances aim the Spray Gun at another person or animal. In the event of an injury seek expert medical advice immediately.
- **NEVER** carry the turbine while spraying.
- Always ensure there is adequate ventilation when spraying.
- After each use, thoroughly clean the Spray Gun and grease the Fluid Needle.

	<ul style="list-style-type: none"> <li>• This appliance can be used by persons aged from 14 years and above and persons with reduced physical, sensory or mental capabilities or lack of experience and knowledge if they have been given supervision or instruction concerning use of the appliance in a safe way and understand the hazards involved.</li> <li>• Children shall not play with the appliance.</li> <li>• Cleaning and user maintenance shall not be made by children.</li> <li>• Use only genuine manufacturer replacement parts.</li> <li>• Always disconnect the unit from the power supply before cleaning.</li> </ul>
	<p><b>PERSONAL PROTECTIVE EQUIPMENT WARNING!</b> Noise levels exceed 85dB(A). Therefore suitable ear protection must be worn.</p> <ul style="list-style-type: none"> <li>• Always wear a suitable protective mask when spraying. The use of gloves, goggles and overalls is also recommended.</li> </ul>
	<p><b>HOT SURFACE!</b></p> <ul style="list-style-type: none"> <li>• <b>CAUTION:</b> Outlet of turbine and air hose may become hot during use. Please allow to cool before removing air hose.</li> </ul>

## Earlex SprayStation Spares and Accessories Store

Earlex stock a large range of spares and accessories. See the range of additional needles for different applications, as well as cleaning kits, paint containers and other accessories at our official online store [store.earlex.co.uk](http://store.earlex.co.uk).

## Register for the 2 Year Guarantee

To benefit from a full 2 year guarantee register your product here [www.earlex.co.uk/registration.html](http://www.earlex.co.uk/registration.html) within 30 days of purchase.

# INTRODUCTION

This powerful spray system applies coatings faster than brushing or rolling. A smooth and accurate finish is maintained without the overspray normally associated with high pressure tank equipment.

Designed for the decorating and finishing industry, the SprayPort® series meets the demands of the serious professional.

The latest technology and materials combine to offer a superior power turbine with an exceptionally lightweight spray gun resulting in a consistently high performance.

The aluminium-framed turbine comes with a variable control allowing adjustment of flow rate for optimum atomization. It incorporates a quad filtration system supplying a continuous and clean air flow.

The spray gun delivers a high volume of air via the fluid tip and features a wide spray option.

Air is fed to the gun through the lightweight HyperFlex™ hose made from Thermo-Vulcanised Polymer.

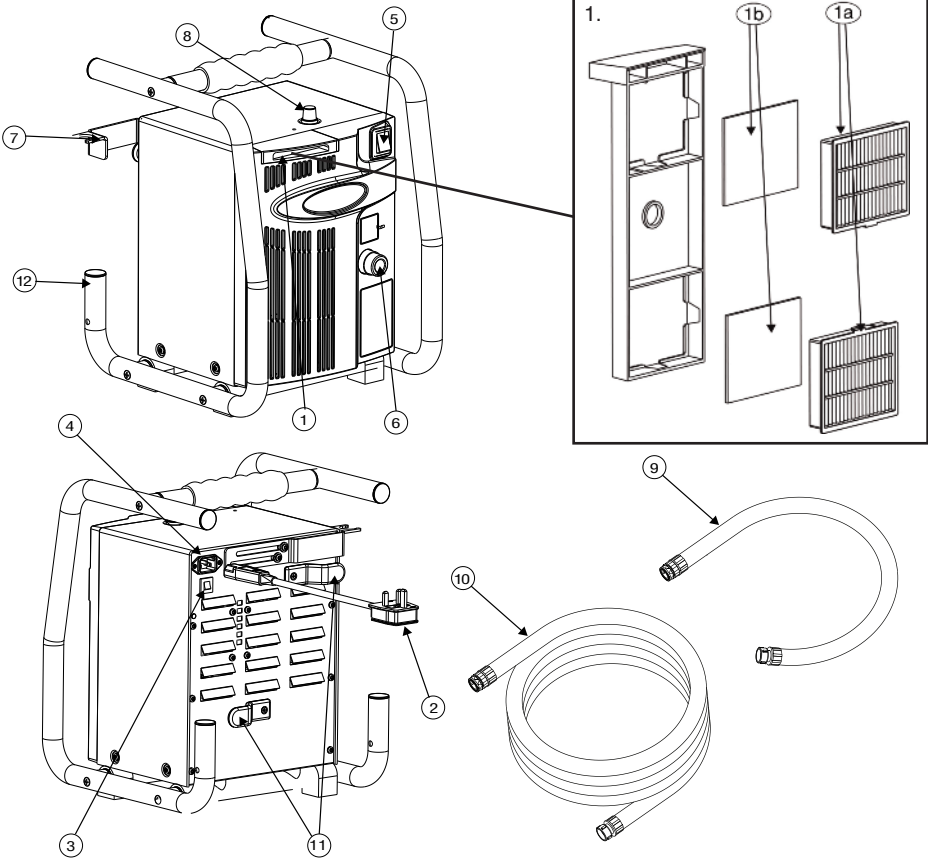
The SprayPort® series uses quick-connect fixings making it quick to set up and easy to transport.

The HV7000 series sprays a wide range of paint and coatings with or without dilution.

To achieve the desired results only use good quality paint. Keep in mind that low temperatures make paint thicker. Therefore use of the Spray Gun is not recommended below a minimum temperature of 15°C.

TECHNICAL SPECIFICATION		
MODEL	7 0 0 3	7 0 0 5
Turbine	3 stage variable control	5 stage variable control
Motor type	Tangential	Tangential
Voltage	230V	230V
Frequency	50Hz	50Hz
Wattage	1600W	1800W
Air filters	Quad filtration	Quad filtration
Pressure rating	psi 7.5 (0.52 bar)	psi 9.5 (0.66 bar)
Air Hose	25ft (7.6m) vulcanised polymer	25ft (7.6m) vulcanised polymer

# SPRAYPORT TURBINE UNIT



## PARTS LIST

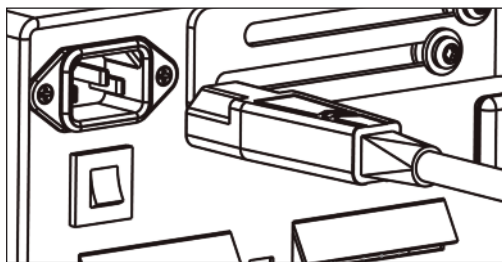
No.	Description	Part No.
1.	Air Filter Carrier	PACC125
1a.	Pleated Filter	PACC60
1b.	Pre Filter (Foam)	PACC61
2.	Cordset	UK: PACC123, EU: PACC124, US: PACC130
3.	Resettable Circuit Breaker	UK/EU: PACC126, US: PACC127
4.	Power Inlet Connector	n/a
5.	Power Switch	n/a
6.	Air Outlet - Hose Attachment	n/a
7.	Gun Storage Dock	PACC83
8.	Variable Power Control	n/a
9.	Heavy Duty Hose 3ft/1m	PACC122
10.	25ft/7.6m Air Hose	PACC121
11.	Cordset Storage	n/a
12.	Aluminium Protection Frame	n/a

## PREPARATION

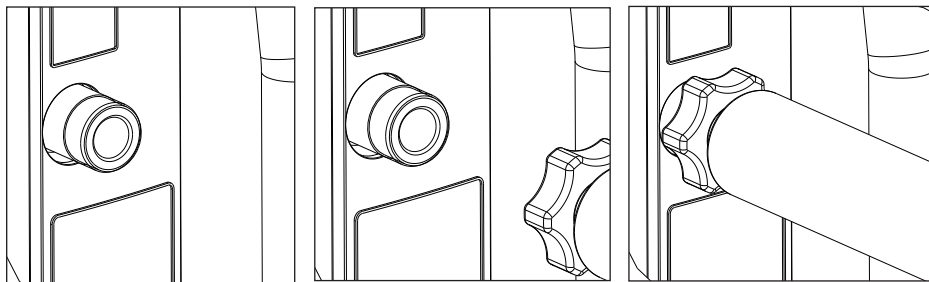
- Unpack turbine and check all parts are present (see parts list) and undamaged.
- Prepare surfaces to be sprayed ensuring they are clean, dry and smooth.
- Ensure there is adequate ventilation.
- Mask off all areas not intended for spraying.

## OPERATION

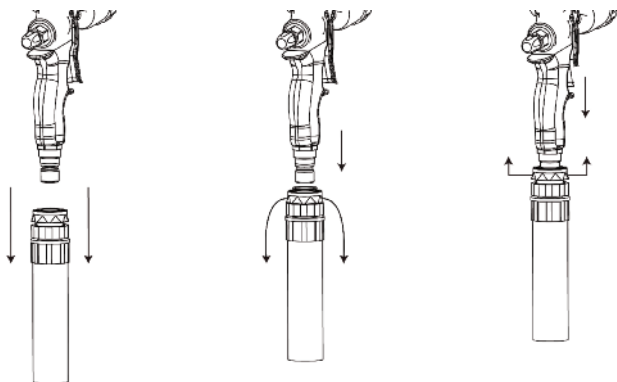
- Prepare the spray gun for operation (refer to Spray Gun Instruction Manual supplied separately).
- Plug cordset into turbine unit.



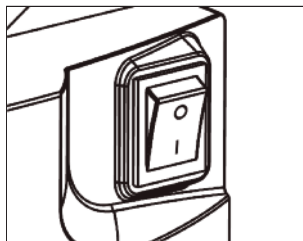
- Attach Heavy Duty Hose (9) to Air Outlet (6), then attach Air Hose (10) to end of Heavy Duty Hose (9).
- WARNING!** Do not connect Air Hose (10) directly to Air Outlet (6).



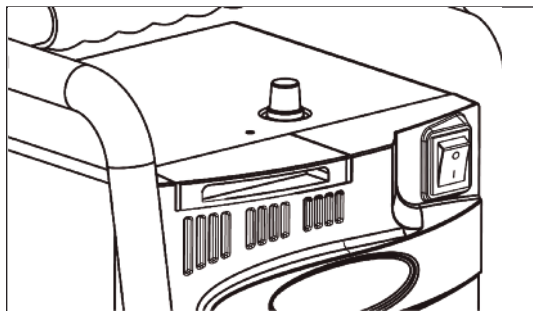
- Join the quick connect hose attachment to the air inlet on the spray gun.
- Tip: If connection is tight loosen the quick connect fitting on the hose by unscrewing a little before connecting to the gun, then retighten.



- Connect cordset to a grounded socket-outlet.
- Turn the power on 'I'.

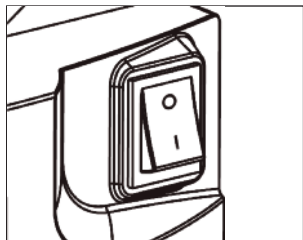


- Familiarise yourself with spraying technique (for detailed instruction on how to operate spray gun refer to Spray Gun Instruction Manual supplied separately) using waste card or wood.
- In addition to the controls on the gun use the Variable Power Control (8). This will increase/decrease airflow to optimise control of spray atomization and coating thickness.

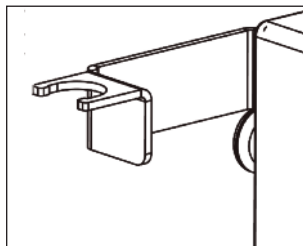


If using your sprayer for less than 1 hour:

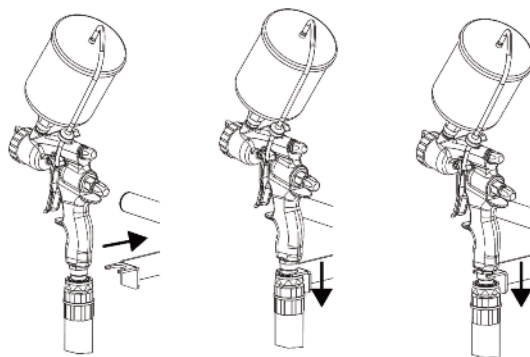
- Turn the power Off 'O'.



- Extend the gun storage dock.



- Dock the spray gun in the gun storage dock.



If leaving your sprayer for more than 1 hour:

- Turn the power Off 'O'.
- Switch power off at mains supply.
- Disconnect cordset plug from the grounded socket-outlet.
- Disconnect the hose from the gun.
- Clean the gun as detailed in the Spray Gun Instruction Manual.
- Allow the turbine unit to cool before disconnecting the hose.



## MAINTENANCE

Some simple maintenance is required to ensure your SprayPort® continues to perform effectively:

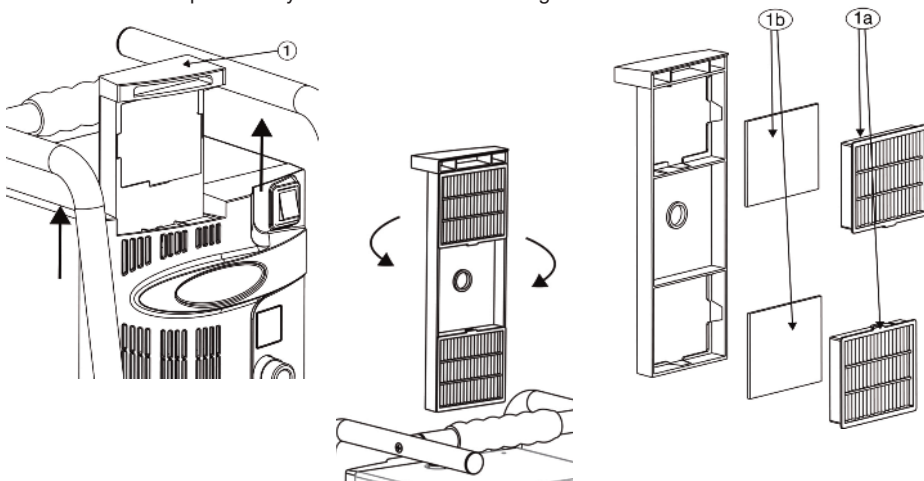
**IMPORTANT:** Always unplug from the mains supply ahead of any maintenance.

### Clean / replace filters

Filters will become soiled during use. When you replace the pleated filter (1a) - we suggest you replace the lower filter first.

To remove:

- Slide air filter carrier (1) up and remove from turbine.
- Unclip main filters (1a) from air filter carrier (1) and remove.
- Remove pre-filters (1b) from air filter carrier (1).
- Clean pre-filters regularly in water with a mild detergent.
- Clean main filters periodically in water with a mild detergent.



Check the condition of pre-filter (1b) carefully and replace if necessary.

**WARNING!** Ensure filter is completely dry before installing.

#### • Cleaning the air hose:

- Keep the outer surface of the air hose clean by wiping with a damp cloth. Do not submerge into or flush through with water or any chemical. Regularly check for cracks, leaks and holes. Replace if necessary.

#### • Cleaning the unit:

- Keep the outer surface of the turbine unit clean by wiping with a damp cloth. Do not submerge into water or any chemical.

#### • Store the unit indoors. Be careful not to twist or trap the power cord.

#### • No other user serviceable parts.

### IMPORTANT:

It is important to regularly check and clean the filters, hose and turbine, paying particular attention to the air inlets and vents. Failure to do so risks damage to the motor or premature failure.

Servicing and repairs must be carried out by authorised service centres only – contact Earlex Head Office for details.

# TROUBLESHOOTING

PROBLEM	CAUSE	ACTION REQUIRED
Little or no spray	Air inlet blocked	Check the condition of the Filters (1a & 1b) and clean or replace
Turbine has no power	No power at supply	Check the power supply
	Circuit breaker has tripped	Reset the Circuit Breaker (3)
	Incorrect Cordset used	Use correct Cordset (2)
	Worn turbine brushes	Replace motor/brushes at an authorised service centre
	Fuse has blown (UK only)	Replace with a BS1362 value 13A fuse



## INFORMATION ON THE DISPOSAL OF WASTE ELECTRICAL & ELECTRONIC EQUIPMENT KNOWN AS WEEE

Please do not dispose of tools with your household waste collected by the council. It is your responsibility to dispose of this type of waste by handing it over to a special designated collection point for recovery and recycling.



Your attention is brought to new directives applicable to the disposal of this electrical equipment, where in accordance with legislation, this product must not be disposed of in your normal household waste. Instead it is your responsibility to dispose of this type of waste by handing it over to special designated collection points for recovery and recycling. This product is marked with a 'Wheeler bin' symbol with a cross on it to remind you of this action. The objective of this directive is to help conserve resources and ensure that it is recycled in a manner that protects human health and the environment. For more information about where you can drop off your waste please contact your local authority, take back facilities are free of charge.

**All rights reserved © 2014**

### EC Declaration of Conformity

We declare that the units HV7003 & HV7005 conform to: LVD 2006/95/EC, EN60335-1, EMF EN62233; EMC 2004/108/EC, EN55014-1, EN55014-2, EN61000-3-2, EN61000-3-3.

### Spray Gun Design Registration

ECD 002307868-0001  
ECD 002307868-0002  
CN 201330263092.9  
CN 201330262777.1  
US applied for

**EARLEX WILL ACCEPT NO RESPONSIBILITY FOR THE USE OF THIS PRODUCT IF USED FOR ANY PURPOSES OTHER THAN THOSE DETAILED HEREIN.**

### 24 Month Guarantee

Earlex automatically issues a 1 year guarantee on your new Earlex product. To upgrade to a 2 year guarantee for free, please register here [www.earlex.co.uk/registration.html](http://www.earlex.co.uk/registration.html) within 30 days of purchase.

The guarantee is effective from the date of purchase against defects in materials or workmanship. This guarantee does not cover abuse, accidental damage, misuse, normal wear parts, motor brush replacement or spray gun maintenance & clean up. The guarantee is void if repairs are made or attempted by unauthorised persons. At our option, Earlex will repair or replace defective parts without charge provided the purchaser return products prepaid to the nearest authorised service centre or to the factory. Factory returns must first receive a Return Material Authorisation.

In USA call +1 (0) 7048277889  
In UK call +44 (0) 1483 454 666  
In EU call +33 (0) 476 671 846  
In China call +86 20 62648721

In other countries please call the company where you originally purchased the product. Earlex will not be held liable if equipment is not used solely for the purpose it was designed. Guarantee will become void through improper installation or operation. Any modifications to the equipment or deviations from the recommended procedures, accidental damage or any related action that impairs or abuses intended use and care of Earlex equipment will also void guarantee and liability. In the event of rentals, this guarantee period is restricted to 6 months.

© Earlex Ltd. Guildford GU1 1SZ  
Helpline telephone no: +44 1483 454666  
[www.earlex.com](http://www.earlex.com)